



# BIG CEDAR<sup>®</sup> LODGE

# IMPORTANT SAFETY

# INFORMATION

## TORNADO PROCEDURES

When inclement weather is in effect for Taney County, we will communicate severe weather alerts via the Zingle text messaging platform.

**In case of an imminent threat of a tornado, you will hear a loud siren. At this time you should TAKE IMMEDIATE COVER** in the appropriate tornado safety areas and follow the appropriate tornado precautions.

Once a Tornado Warning has ended, you will be notified via the Zingle text message platform that the storm has passed or an associate located in the designated take cover area will inform you of this information.

If you have a request for emergency assistance, please dial "0" and an operator will assist you.

Any time the Take Cover procedure has been activated, remember the acronym **D.U.C.K.**

**D**ownstairs to the lowest level of the structure.

**U**nder something sturdy.

**C**enter part of the structure.

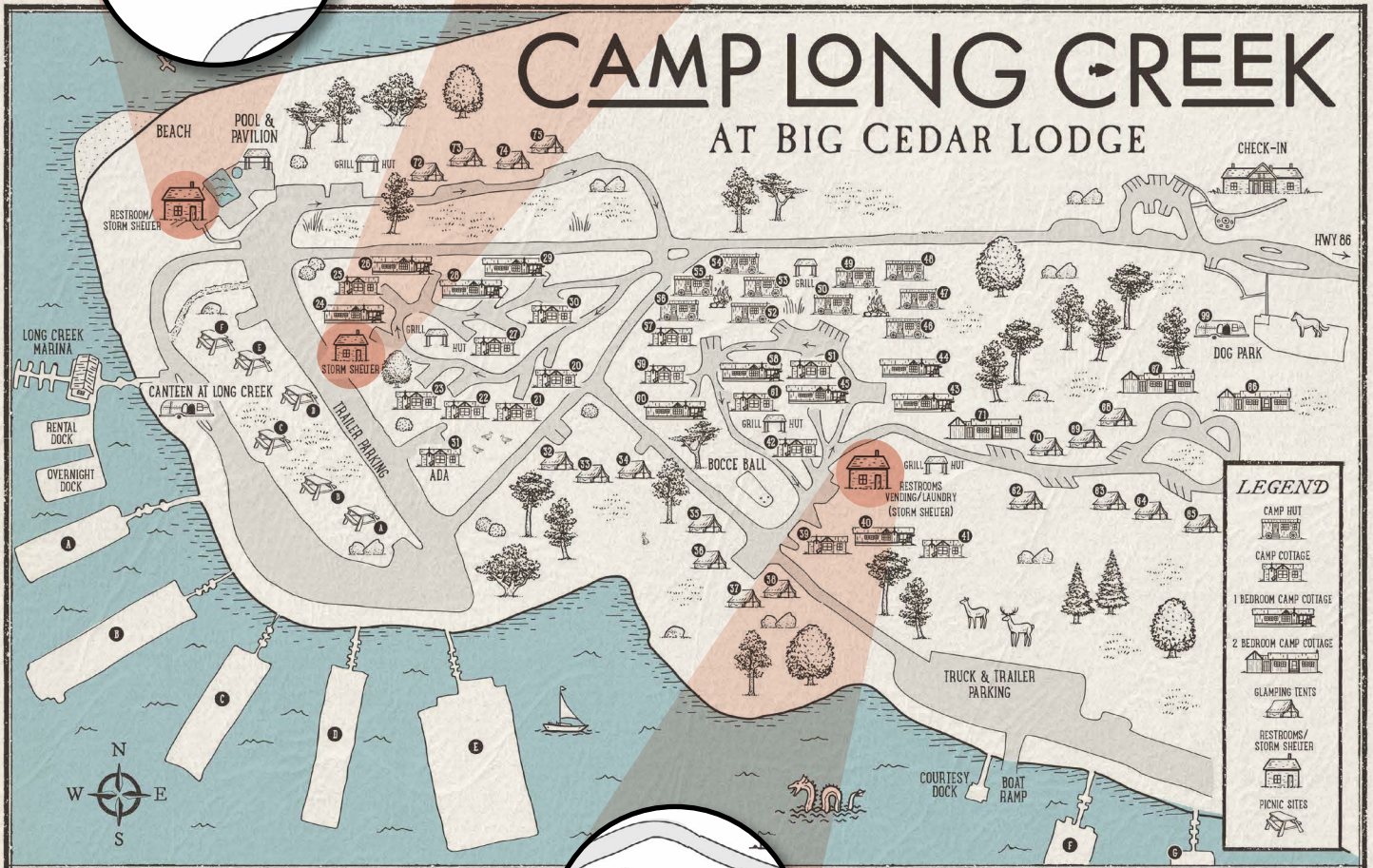
**K**eep away from doors and windows.



# TORNADO SAFETY AREAS

## Zone 1: Camp Long Creek & Long Creek Marina

Take cover in the nearest designated storm shelter. If time does not permit, take cover in the restrooms or closet. All guests in tents must go to the closest designated shelter. **Long Creek Marina, Pool, Beach, Cabana and Guests Afoot in the Area** – get off the docks and take cover in the nearest designated shelter. If time does not permit, take cover in the storage room on the fuel dock.





## **Zone 2: Devil's Pool Restaurant, Buzzard Bar, Spring View Lodge, Knotty Pine Cottages and Recreation Building**

Take cover in a restroom or closet in the lowest level of the structure. **Devil's Pool Restaurant and Buzzard Bar** – take cover in the break room, manager's office or lower level restrooms. **Recreation Building** (includes Ozark Room, Fitness Center & Painting Studio) – take cover in the lower level restrooms. **Spring View Lodge** and **Knotty Pine Cottages** – take cover in an interior closet. If time permits, proceed to the restrooms of Buzzard Bar.

## **Zone 3: Valley View Lodge**

Take cover in a restroom or closet on the lowest level of the structure. If time permits, proceed to the Grandview Conference Center and take cover in the lowest level restrooms or banquet storage area.

## **Zone 4: Cedar Trail Cabins and Bent Hook Marina**

Take cover in a restroom or closet on the lowest level of the structure. **Bent Hook Marina** – get off the docks. If ample time, Marina associates will direct guests to take cover in the housekeeping storage facility beneath Cabin 618. If time does not permit, take cover in the back room of the marina store.

## **Zone 5: Devil's Pool Cabins**

Take cover in a restroom or closet on the lowest level of the structure.

## **Zone 6: Registration, The Shoppe and guests afoot in the area**

Take cover in the downstairs restrooms or the banquet storage closet beneath The Shoppe stairwell.

## **Zone 7: Lakeside Cabins and Bass Pro Shops Lakeside Cottages**

Take cover in a restroom or closet on the lowest level of the structure.

## **Zone 8: The Worman House and Truman Café and Custard**

Take cover in a restroom on the lowest level of the structure.

## **Zone 9: Top of the Rock**

**Osage Restaurant and Buffalo Bar** – take cover in the lower level restrooms and kitchen areas in Buffalo Bar. **Arnie's Barn** take cover in the lowest level of the stairwells and locker rooms located in the Pro Shop. **Ancient Ozarks Natural History Museum** – take cover in the theater room, restrooms or any interior non-glass areas. **End of the Trail All-American Wine Cellar** – take cover in the elevator corridor and the area beneath the stairwell away from windows. **Chapel of the Ozarks** – take cover in a restroom or closet on the lowest level of the structure. **Top of the Rock Golf Course** – take cover in the golf cart tunnel, lower level of Arnie's Barn or the End of the Trail All-American Wine Cellar. If time does not permit, find a low-lying area of the golf course away from trees and lie flat in a ditch. **Jack's Cabin** – take cover beneath the stairwell of the cabin or in a closet on the lowest level of the structure. **Lost Canyon Cave and Nature Trail** – take cover inside the cave if time permits. If on the trail path away from the cave, vacate golf carts, lie flat in a low-lying ditch and cover your head. **Top of The Rock Welcome Center** – take cover in the restrooms.

## **Zone 10: Falls Lodge**

Take cover in the lowest level of the structure in the south stairwells and hallways.

## **Zone 11: Cedar Creek Spa**

Take cover in the lowest level of the structure in the associate break room area or the grotto pool room.



## **Zone 12: Grandview Conference Center**

Take cover in the lowest level restrooms or storage area.

## **Zone 13: Lady Liberty**

Take cover in the restrooms, galley or lay flat on the floor of the lower cabin. Follow the Captain's instructions.

## **Zone 14: Buffalo Ridge, Mountain Top, Ozarks National & Payne's Valley Golf Courses**

If indoors, take cover in a restroom, closet or locker room on the lowest level of the structure. If time permits, take cover in the cart tunnel. If on the golf course, take cover in the cart tunnel. If time does not permit, vacate any golf carts, find a low-lying area of the golf course away from trees and lie flat in a ditch.

## **Zone 15: Integrity Hills**

**Chapel & Stables** – take cover in the lower level restrooms located behind the Chapel. **Villa** – take cover in a restroom or closet on the lowest level of the structure.

## **Zone 16: Angler's Lodge Hollister**

Take cover in the lowest level of the structure in the restrooms or stairwells.

## **Zone 17: Fun Mountain**

Take cover in the lower level storage room on the north side of the structure or lower level restrooms.

## **Zone 18: Payne's Valley Cottages**

Take cover in a restroom or closet on the lowest level of the structure.

## **Zone 19: Tall Tales**

Take cover in the restrooms or golf simulator for overflow.

**NOTE: Anyone caught outdoors during a tornado warning without time to make it to a "safety area" should exit vehicle, lie down in a low spot, ditch, culvert, or ravine (away from power lines and trees) and shield their head with their arms.**

# **LIGHTNING**

**30/30 Lightning safety rule:** After you see lightning, start counting to 30. If you hear thunder before you reach 30, cease outdoor activities and seek shelter indoors. Suspend outdoor activities for at least 30 minutes after the last clap of thunder.

**Golf Courses:** If you are caught in a lightning storm while on a golf course, squat down to the ground, resting on the balls of your feet with 30' of distance from fellow golfers and cover your head.



# EVACUATION PLAN INFORMATION

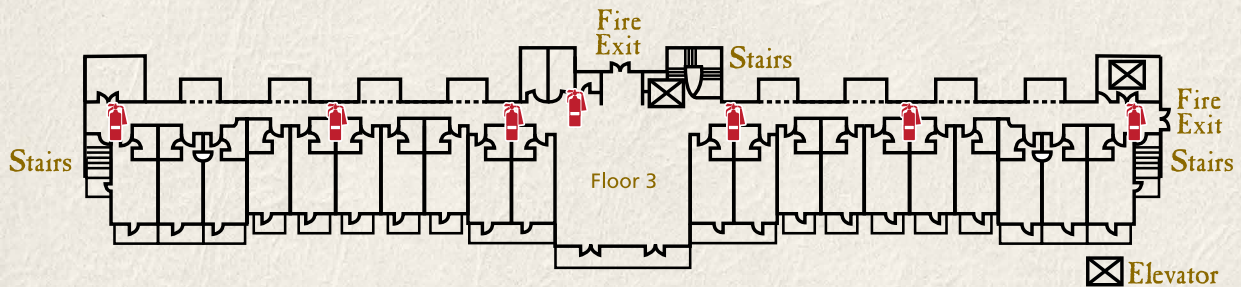
**In case of fire, exit through the closest door. Do not use elevator.** If you detect fire or smoke, call "0" for an operator or in the event of an emergency dial "911."

If smoke is heavy, seal the door with wet towels. Stay near or lie on the floor where air will be clearer until help arrives.

If you must leave, feel the door to see if it is hot. If not, open the door cautiously and evaluate the condition of the evacuation route. If it appears safe, proceed to leave your room. Please close the door behind you. Be sure to take your room key with you as you may have to re-enter your room if the evacuation path is blocked.

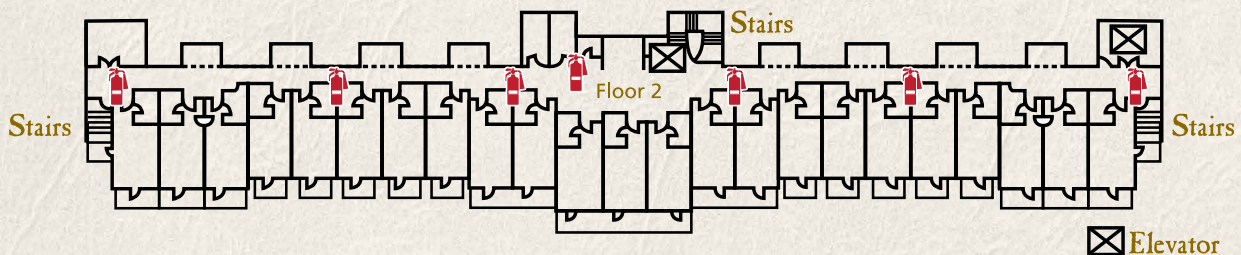
## FALLS LODGE – 3rd Floor (Top Floor)

In case of fire, exit through front or side door of lodge. Do not use elevator.



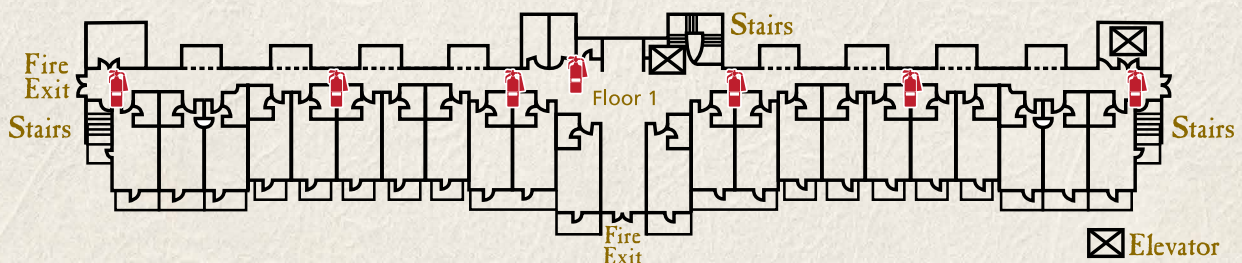
## FALLS LODGE – 2nd floor (Middle Floor)

In case of fire use stairway for exit. Do not use elevator.



## FALLS LODGE – 1st floor (Bottom Floor)

In case of fire use stairway for exit or exit through front door. Do not use elevator.





## **VALLEY VIEW LODGE**

In case of fire, use main door and stairway for exit.

Fire extinguishers: located on the exterior of the building between select rooms on each level.

## **SPRING VIEW LODGE**

In case of fire, use main door and stairway for exit.

Fire extinguishers: located on the exterior of the building between select rooms on each level.

## **ONE ROOM CABINS**

In case of fire, use main door for exit.

Fire extinguisher: located in the closet.

## **2 BEDROOM CABINS**

In case of fire, use main door for exit.

Fire extinguisher: located in the queen bedroom closet.

## **3 BEDROOM CABINS**

In case of fire, use main door on first floor for exit.

Fire extinguishers: located in the master bedroom closet and in the upstairs bedroom closet.

## **KNOTTY PINE COTTAGES**

In case of fire, use main door for exit.

Fire extinguisher: located on the wall behind the entry door.

## **BASS PRO SHOPS LAKESIDE COTTAGES**

In case of fire, use main door for exit.

Fire extinguisher: located on the wall behind the entry door.

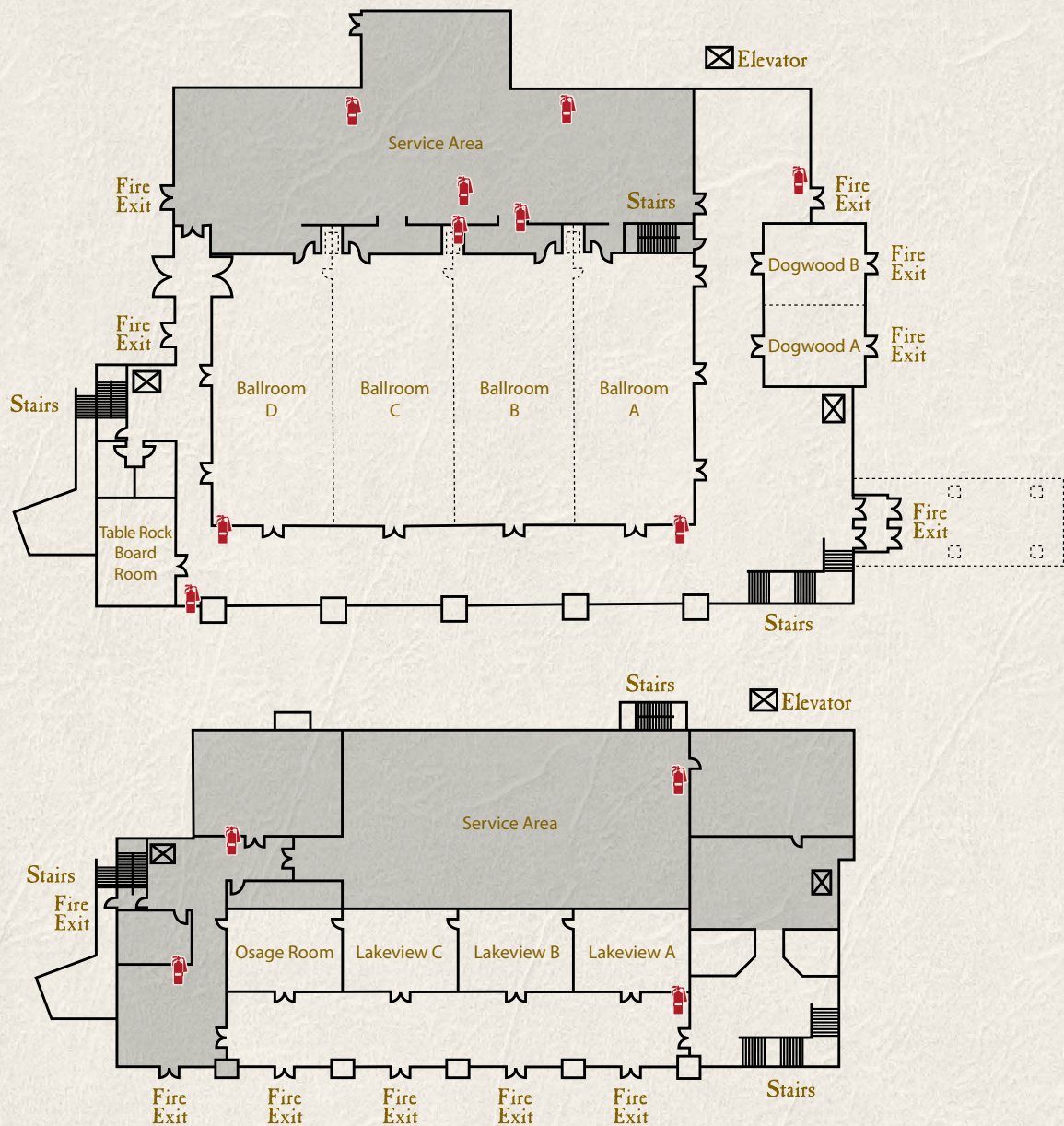
## **PAYNE'S VALLEY COTTAGES**

In case of fire, use main door for exit.

Fire extinguisher: located on the wall behind the entry door.



# GRANDVIEW CONFERENCE CENTER



## EVACUATION PLAN INFORMATION

**In case of fire, exit through the closest door. Do not use elevator.** If you detect fire or smoke, call "0" for an operator or in the event of an emergency dial "911."

If smoke is heavy, seal the door with wet towels. Stay near or lie on the floor where air will be clearer until help arrives.

If you must leave, feel the door to see if it is hot. If not, open the door cautiously and evaluate the condition of the evacuation route. If it appears safe, proceed to leave the room. Please close the door behind you.